



UNDERGROUND  
WORKS

# TWIN FP

## BENTONITE SLURRY PRESSING STATION



Le sable, l'eau,  
pour mieux construire demain

# Technical specifications

- More than 25 years of experience in the treatment of bentonite slurry
- More than 200 filter-presses put into service for bentonite slurry
- Solution pre-assembled, pre-equipped and tested in our workshops

## KEY FEATURES

- Dosing of lime and coagulant
- Cakes membranizing
- Filtrates recovery and pH correction
- On-line control of siccidity

## MODULAR AND EASILY REUSABLE

- Containers format

## TREATMENT OF WASTE SLURRY FROM EXCAVATION WORKS

- Slurry and variable density TBMS
- Foundations

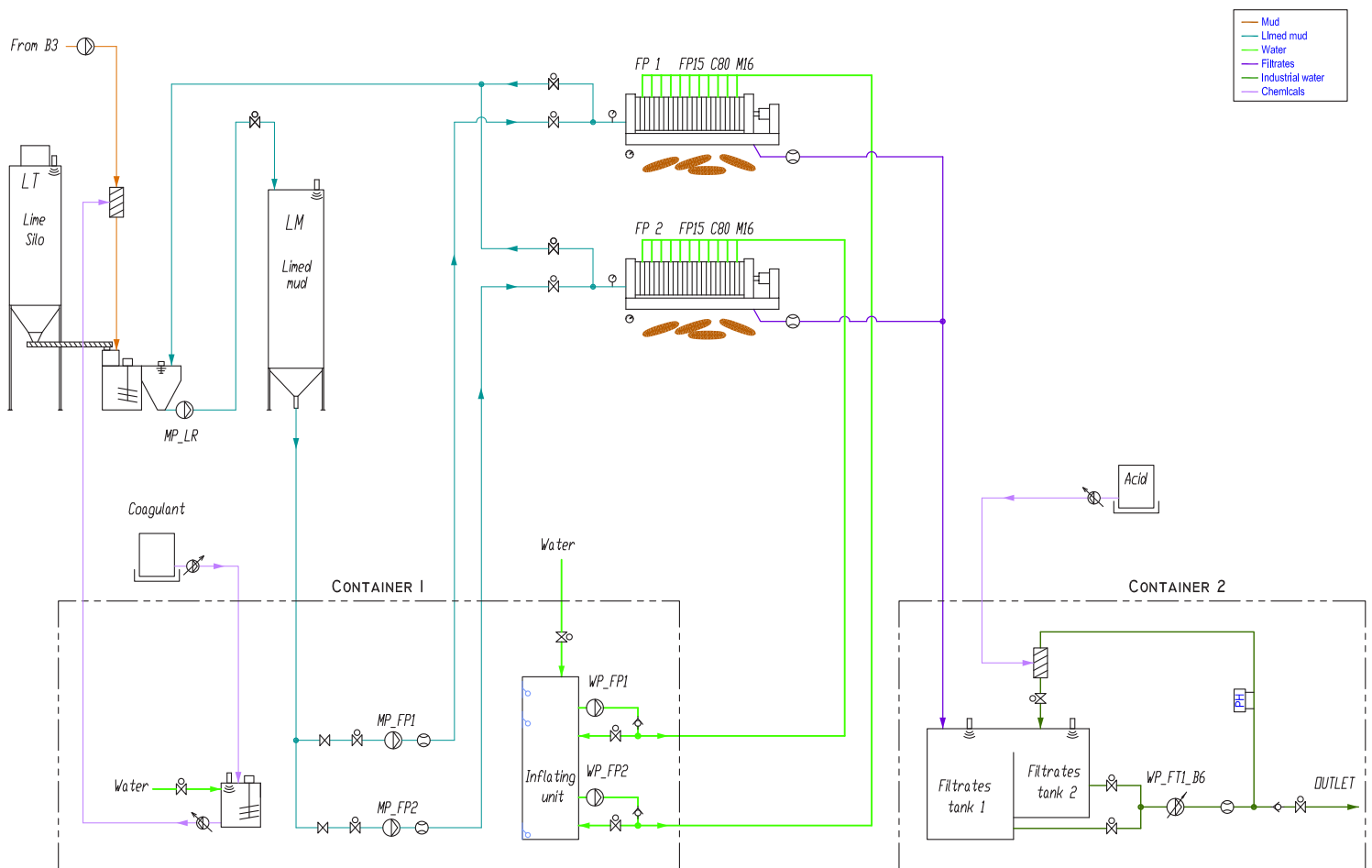
## CAPACITIES

- 60 to 120 m<sup>3</sup>/h of excess mud
- 15 to 40 t/h of solids

### QUICK ASSEMBLY



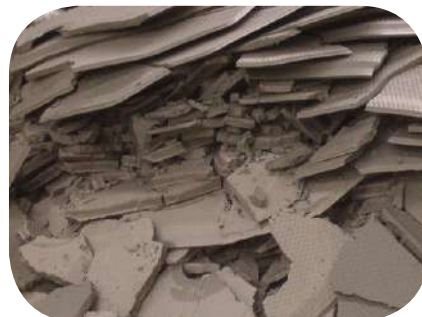
# Process



Before treatment



pH corrected recycled water



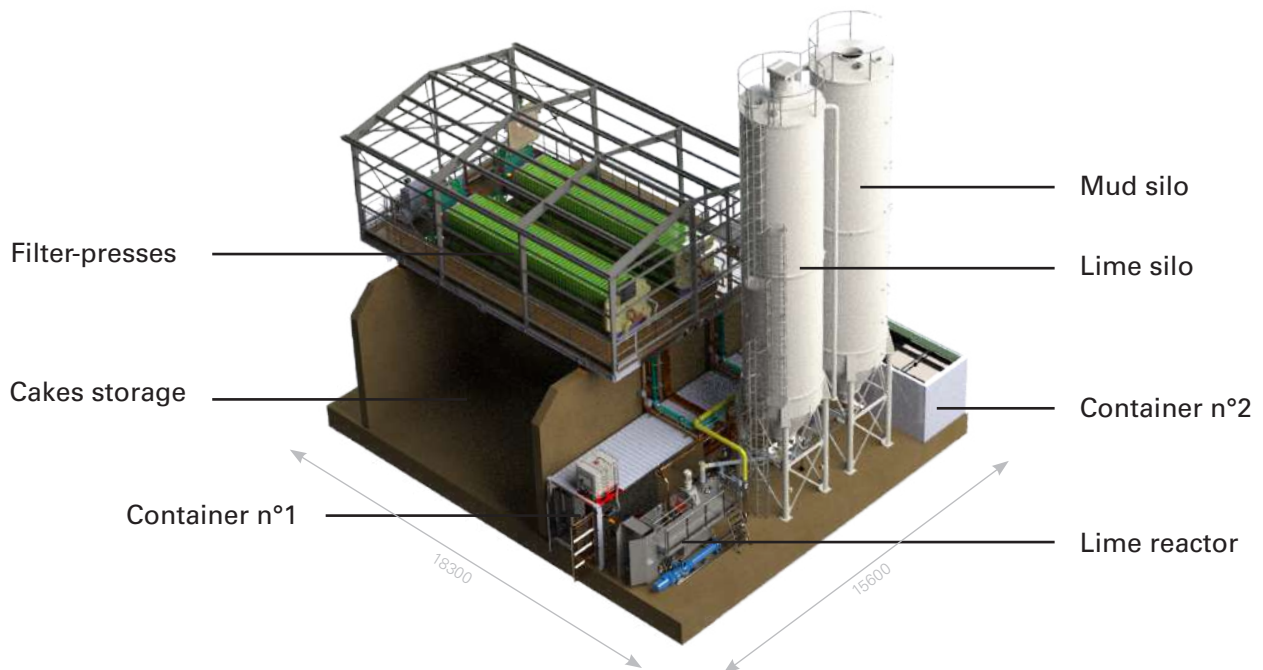
Dehydrated cakes

After treatment

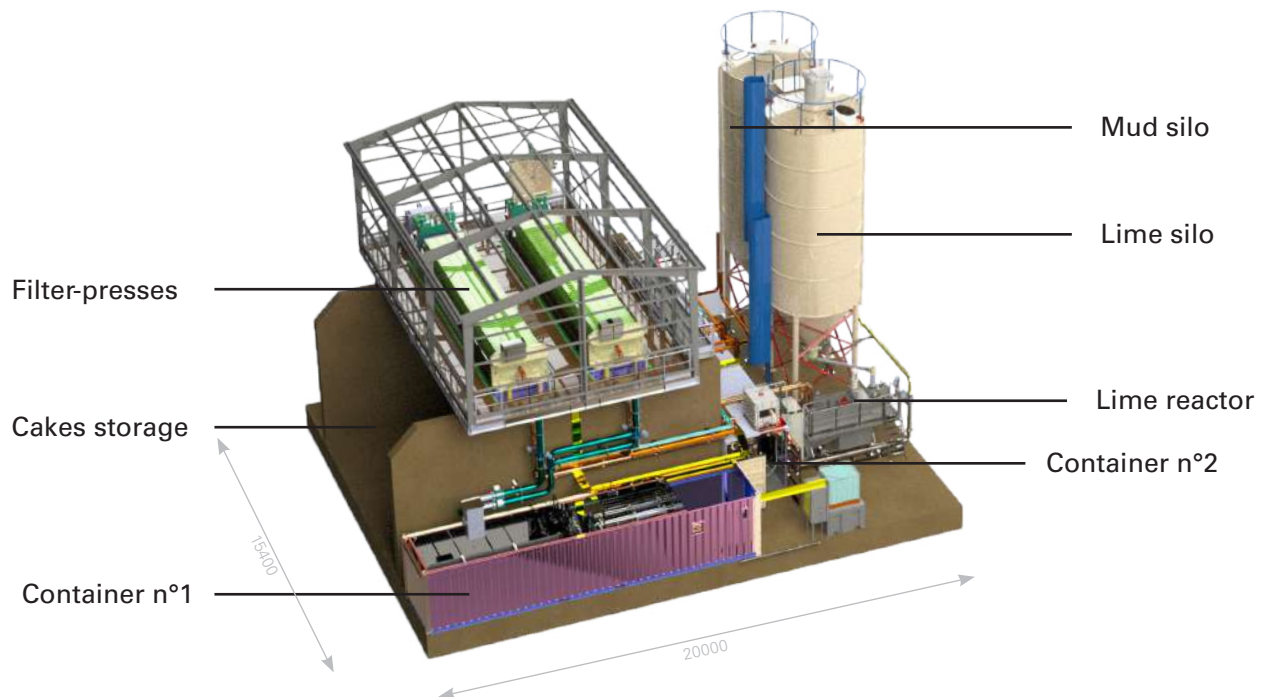


## 2 available layouts

### V1

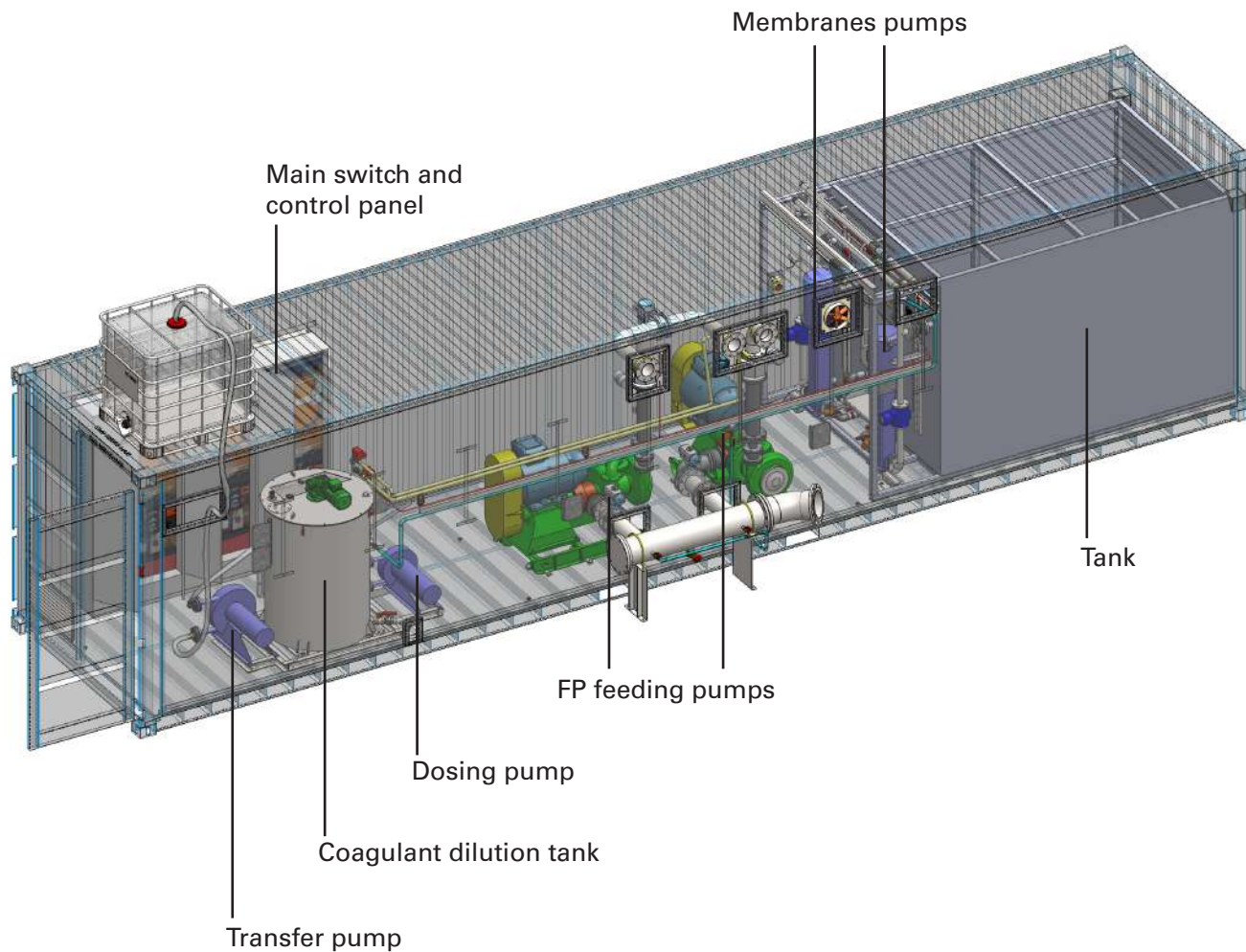


### V2

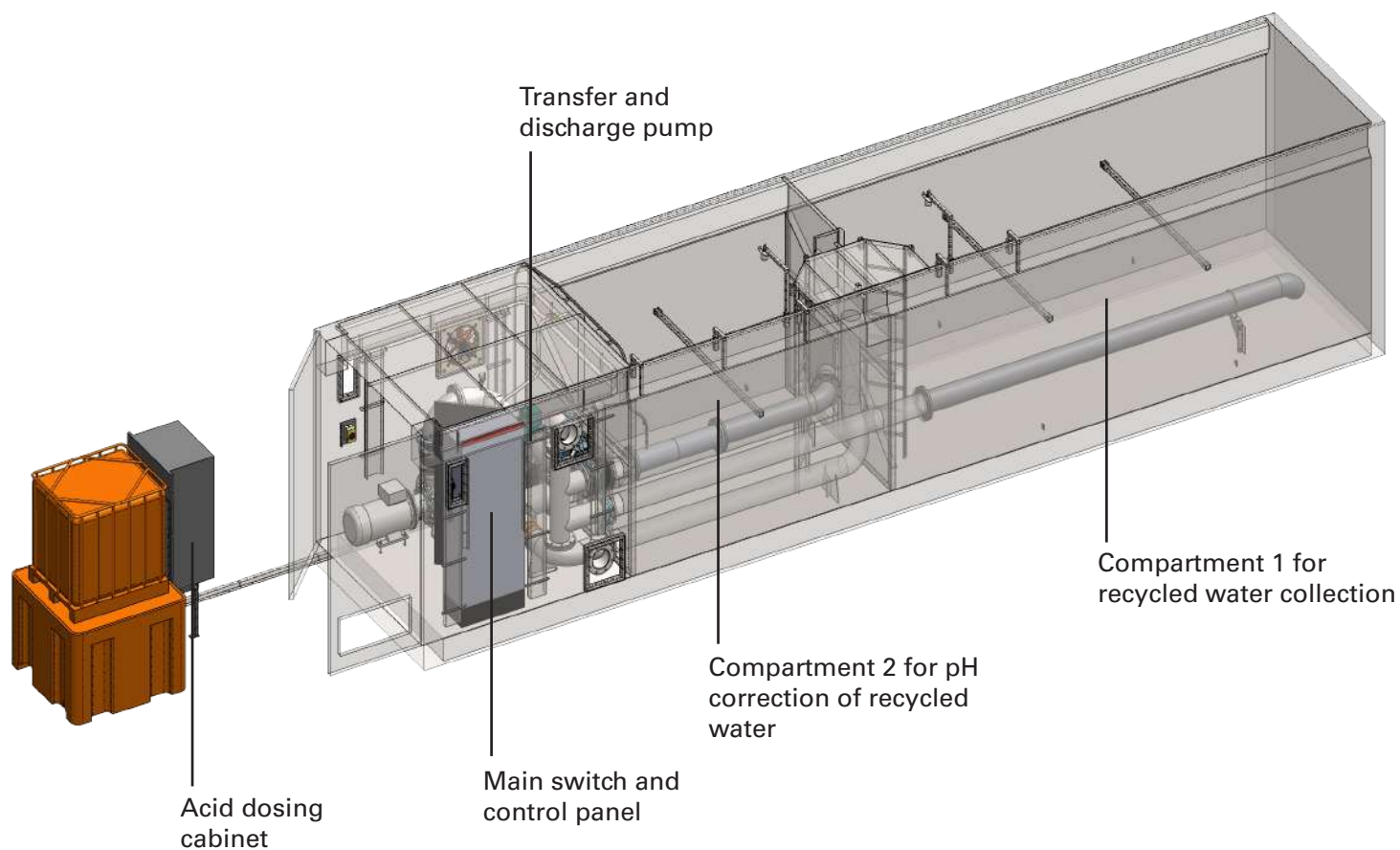


The bentonite slurry pressing station is also available as single FP (1 single filter press) or customized (with several filter presses).

## CONTAINER N°1



## CONTAINER N°2





Project Humber Feeder 9 - United Kingdom (during the erection phase)



Project Humber Feeder 9 - United Kingdom (during the erection phase)





## Project Forrestfield - Australia



## Project KVMRT - Malaysia (during the erection phase)





## Spare parts

- The main wear or maintenance parts for your equipment on permanent stock
- A guarantee that you dispose of recommended spare parts in your stock
- Creation of a spare parts monitoring for every site
- Collaboration with our team of experts to guarantee a quick and efficient installation on site

## Remote diagnosis of your plant

MS teleports its expertise in real time and carefully on your plants all around the world

- Greater efficiency
- Optimization of operation cost
- Tracability of performances

## Services contracts

- Preventive real support to limit major accident therefore the curative emergency
- Scheduled and prioritized availability of our technicians
- Tracability of your installation by our departments

Technical diagnostic of your equipment

Control of production performances

Check-up of wear parts and recommendation

Additional training of your operators



Le sable, l'eau,  
pour mieux construire demain

2 rue Pierre-Gilles de Gennes  
Pra de Serre 63960 Veyre-Monton - France  
tel +33 (0)4 73 28 52 70 - fax +33 (0)4 73 28 52 71  
info@m-s.fr - www.m-s.fr



Follow us on social network

